

Single-Use
Instruments

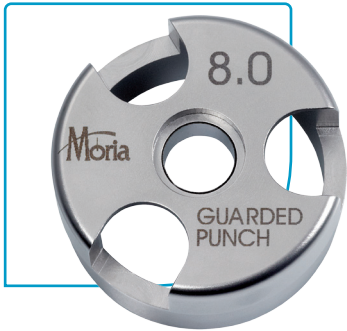


The **one**[®]
Guarded Punch

Single-Use Guarded Corneal Punch

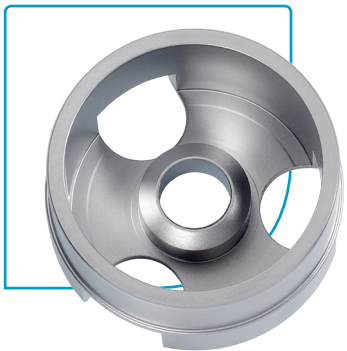
Now just one press scores Descemet's membrane!

The **one**® Guarded Punch



Excellent visibility

- ✓ Three-window design
- ✓ Fully rotational design with no pins
- ✓ Rounded guard – Facilitates tissue separation and tissue pick-up



Precise cut

- ✓ Bi-bevel blade - Blade does not slide during cutting
- ✓ Exceptionally sharp - Razor blade stock for clean cutting
- ✓ Preset Depth - To score Descemet's membrane with a simple press



Excellent centering and precise fit

- ✓ 4 cardinal reference marks - To align tissue on punch base
- ✓ 21 small vacuum holes - To hold tissue firmly and evenly
- ✓ Perfect blade alignment - For a precise fit
- ✓ Simple graft preparation - May be used with or without vacuum

A large choice of diameters

- ✓ For Tissue preparation : Sizes 9.5mm and 10.0 mm
- ✓ For the OR : Sizes 7.5 mm, 7.75 mm, 8.0 and 8.5 mm

To obtain more information



MORIA SA
15, rue Georges Besse
92160 Antony
FRANCE
Phone: +33 (0) 1 46 74 46 74
Fax: +33 (0) 1 46 74 46 70
www.moria-surgical.com

MORIA JAPAN KK
Inami Bldg. 6F
3-24-2 Hongo Bunkyo-ku
Tokyo 113-0033
JAPAN
Phone: + 81 3 5842 6761
Fax: + 81 3 5842 6762
www.moriajapan.com

Moria Shanghai Office
RM4, 10 FL, Kai Li Building
N°432 Huai Hai West Road
200052 Shanghai
CHINA
Phone: +86 21 5258 5068
Fax: +86 21 5258 5067
www.moria-surgical.com.cn

Moria
Leading Innovations in Ophthalmology